

مجلة
الجمعية المصرية لهواة طوابع البريد



JOURNAL DE LA
SOCIÉTÉ PHILATELIQUE D'EGYPTE
LE CAIRE

JOURNAL OF THE
PHILATELIC SOCIETY OF EGYPT
CAIRO



June Quarter 2021
Vol XII No 2- Issue No 152

L'ORIENT
PHILATELIQUE

PHILATELIC SOCEITY OF EGYPT

16 Abd El-Khalek Sarwat St., Cairo – P.O. Box 142

Administration Board

Dr. Eng Sherif Samra	President
Mr. Hany Salam	Vice President
Mr. Khaled Mostafa	General Secretary
Mr. Raouf Ramzy	Treasurer
Mr. Mahmoud Ramadan	Member
Dr. Sherif El-Kerdani	Member
Eng. Tarek Mokhtar	Member
Mr. Ahmed Youssef	Member
Mr. Mohamed Yehia	Member

L'OP Magazine

Dr. Amr EL-Etreby	Editor in Chief
-------------------	-----------------

Cover design by Dr. Eng. Mohamed Omar



L'Orient Philatelique

PHILATELIC SOCEITY OF EGYPT



**FOUNDING MEMBER OF
THE INTERNATIONAL FEDERATION PHILATELY PRESS**

International Philatelic Exhibition
Bronze Medal, (WIPA 1933), (PRAGA 1938).

National Philatelic Exhibition
Silver Medal, (Alexandria 1939), (Alexandria 1945).

International Philatelic Exhibition
Vermeil Medal, (Cairo 1946). Bronze Medal, (Imaba 1948). Silver Medal, (Reinatex Mte. Carlo 1952). Vermeil Medal (Stockholmia 55), (Finlandia 56).

Content of This Number

	Pages
Three hotel cancellations on one post card.....	5
Provisional Issue – 1st January 1879...2 values – 5 paras and 10 paras.....	8

CONGRATULATIONS



Two of our eminent board members are now certified as Fellows of The Royal Philatelic Society London.



Hany Salam



Mahmoud Ramadan



It is with heavy hearts that we received the sad news about Dr. Sherif El-Kerdani, a man with great contribution to the Egyptian Philatelic Society and to the Egyptian Philately.

In addition to being a board member of the EPS, Dr. Sherif was a scholar not only of the Posta Europea but also of many traditional and postal history topics. We shall all miss his visits to the EPS premises and the fruitful discussions, something he had been always keen on.

Dr. Kerdani left his mark to remain.

بقلوب مؤمنة تلقينا النبأ الحزين عن الدكتور شريف الكرداني، رجل له إسهامات كبيرة لجمعية الطوابع المصرية وللهاوية بصفة عامة.

لم يكن د. شريف عضواً في مجلس إدارة الجمعية فحسب بل باحثاً في Posta Europea و العديد من موضوعات البريد التقليدي والتاريخ البريدي. سنفتقد جميعاً زيارته لمقر الجمعية والمناقشات المثمرة التي كان يحرص عليها دائماً.

البقاء لله و انا لله و انا اليه راجعون

Three hotel cancellations on one post card

By Ahmed Almaghraby

كارت بوستال ضمن مجموعة كروت الكوميك الخاصة بمجموعة شركات Raphael Truk & Sons لقيته ضمن مجموعتي يحتوى على ثلاث أختام فنادق:

1- ختم فندق شبرد 7 H-Sp Type :

2- ختم فندق سافوى أسوان 2 H- Sva Type :

3- ختم فندق ووتر بلاس الأقصر H- WP4 Type :

والكارت واحد من ثمانية كروت من مجموعة كوميك أصدر عام 1908

أنتاج وتنفيذ شركة Raphael Truk & Sons :

رسومات المصور الانجليزى Lance Thacheray

عنوان الكروت : احوال المصريين المعيشية وتصرفاتهم

كل كارت من المجموعة يبحكى موقف طريف على جزئين : جزء أكبر فى الكارت وهو بداية الحكاية ويليه الجزء الثانى صغير فى طرف الكارت بقية الحكاية ودا بيدى نوع من الفكاهة والسخرية البسيطة وبداية من انواع الرسوم المتحركة فى بداية القرن الماضى وقبل التصوير السينمائى او التلفزيونى

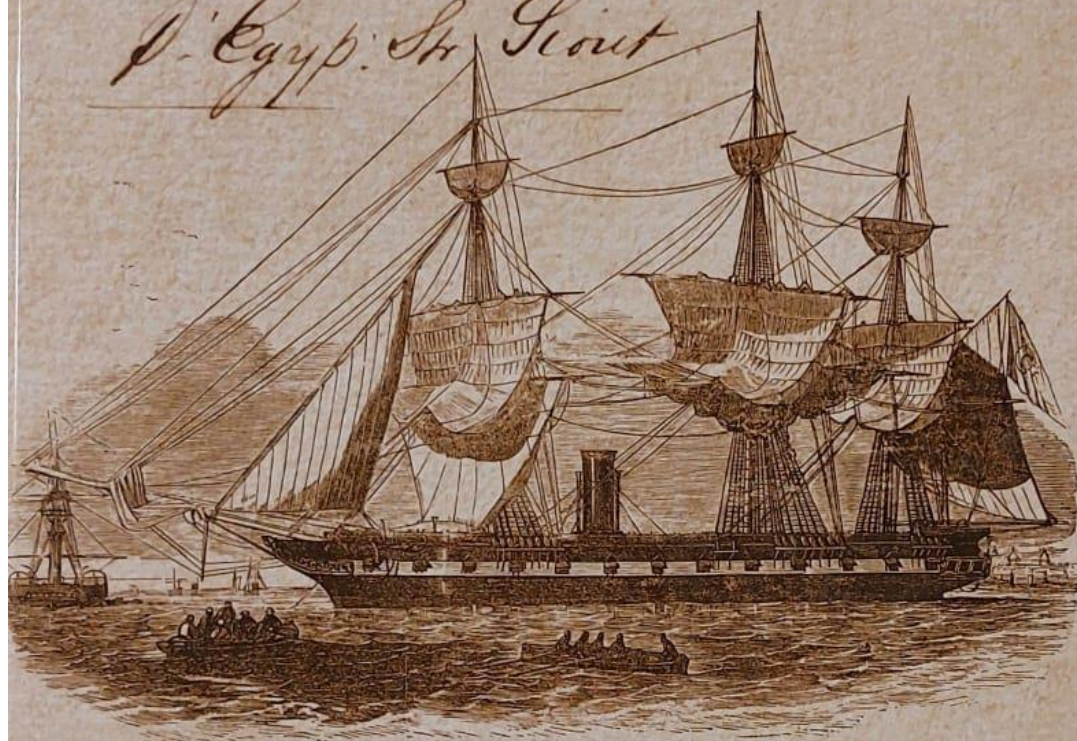
معلومة بسيطة عن الرسام الانجليزى Lance Thacheray الذى ولد سنة 1869 فى انجلترا وحضر الى مصر متعاقدا مع شركة Raphael Truk & Sons لتقديم رسومات عن مصر فى بداية 1904 وقدم أكثر من 950 عملا وتم طباعتها على كروت بوستال للشركة فى مصر واستمر العمل فى مصر حتى بداية الحرب العالمية الاولى ولكن مرض مرضا شديدا وعاد الى انجلترا وتوفى سنة 1916 عن عمر يناهز 47 عاما انجز فيهم العديد من الرسومات والاعمال الفنية عن مصر واحوال وطبيعة المصريين





The Egyptian Maritime Postal History La Poste Maritime en Egypte 1845-1889

D'Egypte: St. Louis



EGYPTIAN STEAM FRIGATE SHAHKIEH

Hany Salam

Provisional Issue – 1st January 1879**2 values – 5 paras and 10 paras****By EPS member Sherif Samra****Surcharge essay - 5 paras****Surcharge essay - 10 paras**

2 values – 5 paras and 10 paras

Provisional Issue – 1st January 1879

In 1878 a fourth issue of Egyptian stamps with a revised design had been proposed but the supply of this new issue was delayed by the Egyptian Government haggling over the price and by suggesting alterations to the design. Neither of which was acceptable to the printers De La Rue & Co. Ltd. of London. A provisional issue became necessary when supplies of the 5 and 10 paras values used for domestic and printed matter rates became low because of the delay.

It had been realised that there was a large surplus of the 2 1/2 piastre value of the then current third issue. That was partly arising from the adherence of Egypt to the U.P.U. convention which caused changes in the postal rates for which the 2 1/2 piastre stamps had previously been required: e.g. for the carriage of mail in accordance with the Conventions with Austria in 1868 and Italy in 1872. To provide the values required and to try to dispose of the surplus 2 1/2 piastre stamps it was decided to overprint these stamps with the "5 paras" and "10 paras" values.

The overprints were lithographed in black by the Government printing works at Boulac, Cairo in complete sheets of 200 stamps. The printing stone being built up from an intermediate stone of 50 subjects. Guidelines were removed from the 5 paras stone. Some were left on the 10 paras stone and can be seen on some of the stamps overprinted with that value.

Overprints of the two values were made on sheets of stamps originally perforated both 12 1/2 and 12 1/2 x 13 1/4. The stamps were on sale only at the main post offices in Cairo and Alexandria.

This one frame illustrates the major varieties of the surcharge including the top rarity of position 154 inverted surcharge, the shades of colours, the perforations, the positions and the usage.

2 values – 5 paras and 10 paras
Provisional Issue – 1st January 1879



Surcharged essays for the 5 paras and 10 paras over the 2 1/2 piastres value were presented for approval in 1878 by the Government Khedeival Printing Works in Boulac, Cairo. The surcharges were made in black and red colours. Both were not approved. A totally different choice for black bold figures and letters to print the 5 paras and the 10 paras in Arabic and English was adopted. *These essays are of the highest rarity.*

2 values – 5 paras and 10 paras
Provisional Issue – 1st January 1879



5 Paras overprinted on 2 1/2 Piastres in bright violet block of 60, perforations 12 1/2.
 Stamp number 1: variety Cleft Pyramid and stamp number 54: variety Indented Frame.

2 values – 5 paras and 10 paras
Provisional Issue – 1st January 1879



Imperforate.



Late usage on 15.08.1880 at Alexandria.



*Block of 35, perforation $12 \frac{1}{2} \times 13 \frac{1}{4}$ in bright violet.
 Bottom three lines: variety overprints shifted downwards.*

2 values – 5 paras and 10 paras
Provisional Issue – 1st January 1879



Blocks of four and nine in pale and blueish violet, perforations $12\frac{1}{2} \times 13\frac{1}{4}$.



Block of 25 in grey- violet. Surcharges misplaced upward, perforation $12\frac{1}{2}$.

2 values – 5 paras and 10 paras
Provisional Issue – 1st January 1879



Block of 4 in extra deep violet. Unusual.



Vertical misperforations.



S.E. Value damaged in stamp 1



Broken 5



Indented Frame



Left Side of
Frame Doubled



Variety: displacement to different sides on used and unused examples.

2 values – 5 paras and 10 paras
Provisional Issue – 1st January 1879



Marginal block of four inverted watermark in bright violet.



Perforations 12 1/2 x 13 1/4



Perforations 12 1/2



Block of 9 in pale violet, perforations 12 1/2

2 values – 5 paras and 10 paras
Provisional Issue – 1st January 1879



Perf 12 1/2



Misperforated



Perf 12 1/2
 Pale Lilac



Perf 12 1/2 x 13 1/4



Perf 12 x 12 1/2



Perf 12 x 13



Newspaper Precancel



British Post Office



Nile Steamer



Inverted surcharge on deep violet, used and pale violet examples



Small 5



Longer "PARA"



Large 5

2 values - 5 paras and 10 paras
Provisional Issue - 1st January 1879



10 Paras overprinted on 2 1/2 Piastres.
 Vertical Tête - Bêche. One of the rarest varieties. **C.**



Split O and arabic letters
 (pre-printing paper fold).



Variety: moon on 1



Split figures and dramatic misplacement.



Part of the English writing is missing on the corner side stamp.

2 values – 5 paras and 10 paras
Provisional Issue – 1st January 1879



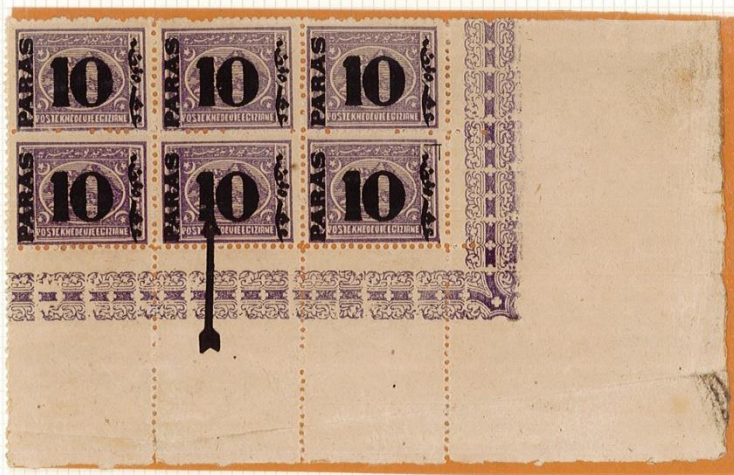
Pale violet.



Deep/ Dark violet.



Block of 6. Variety: misplacement downwards.



Block of 6 in bright violet. Variety: stamp 5 moon on 1.

2 values - 5 paras and 10 paras
Provisional Issue - 1st January 1879



Top left marginal block of four of 10 Paras overprinted on 2 1/2 Piastres.
 In bright violet. Variety: Cleft Pyramid underneath the O on stamp number 1.



Top left marginal corner block of ten in dull violet.
 Variety: Cleft Pyramid underneath the O stamp number 1.

2 values – 5 paras and 10 paras
Provisional Issue – 1st January 1879



Variety: moon on O stamp 4.



Block of 4 perforations $13\frac{1}{2} \times 12\frac{1}{2}$.



Blocks of four in pale, bright and dull violet with different perforations.

2 values – 5 paras and 10 paras
Provisional Issue – 1st January 1879



Misplacement right.



Misplacement left.



Misplacement downwards.



Misplacement upwards.



Block of 9. Variety: stamp 2 broken 1.

2 values – 5 paras and 10 paras
Provisional Issue – 1st January 1879



Variety: misplacement right.
 Block of 4 perforations $13 \frac{1}{2} \times 12 \frac{1}{2}$.



Block of 4 perforations $12 \frac{1}{2}$.



Positions of the sheet in bright and dull violet.



Block of 9. Variety: misplacement upward and right.

2 values – 5 paras and 10 paras
Provisional Issue – 1st January 1879



Two examples: imperforates in grey and dull violet.



Trace of Surcharge.



Blue Postmark.



Dramatic misplacement.



In Grey violet
 Inverted surcharge.



Variety: moon on O
 Inverted surcharge.



Variety: Dot on 1
 Inverted surcharge.



Unused Pale violet
 Inverted surcharge.



Inverted watermark
 Inverted surcharge.



Used in deep violet
 Inverted surcharge.



Surcharge
 upwards.



Horizontal
 misperforations.



Surcharge
 downwards.

2 values – 5 paras and 10 paras
Provisional Issue – 1st January 1879



Used and unused inverted surcharge of characters and figures.



Surcharge is lifted upwards. Two sheets are known.



Violet Cancellation.

Blue Cancellation.

Green Cancellation.



Perf 12 1/2 x 13.

Perf 12 1/2.

Perf 13 x 13 1/2.



The members of the Philatelic Society of Egypt, PSE, have for some time noticed that Arabic texts whether on covers, postcards, documents ... etc. are being erroneously translated into English in catalogs, magazines, websites and even private collections, with serious consequences to the interpretation of the item in question.

The PSE has a group of members who are fluent in both Arabic and English languages and are gladly willing to help not only with any translation required, but also with the interpretation of other aspects relating to social, historical and geographical circumstances of the time, such as familial salutations, bureaucratic jargon, handwritten annotations and talismanic markings.

This service is available to anyone, just send to this email a clear scan of the item; front and back of a cover, postcard, content of a letter or document ... etc. and we shall be happy to oblige as soon as possible.

Provisionally, this service is free of charge for single items.

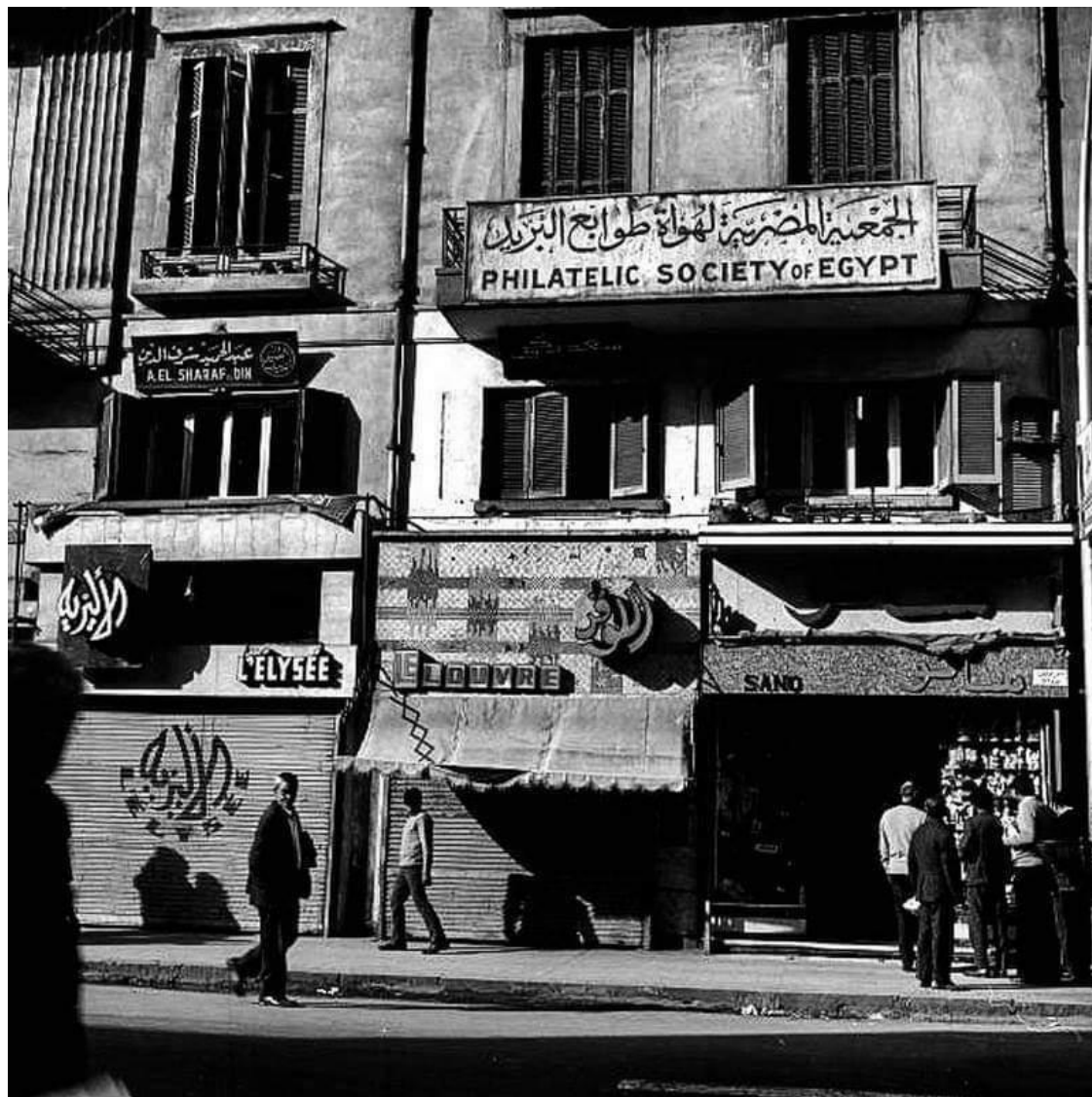
Email : egyptianphilatelicsociety@gmail.com

The Mohamed Aly Post (MAP)



The True Origin of the Egyptian Vice Royal Post

**By
Mahmoud Ramadan**



PHILATELIC SOCEITY OF EGYPT

16 Abd El-Khalek Sarwat St., Cairo – P.O. Box 142

Email: egyptianphilatelicsociety@gmail.com